

ALL ABOARD 2023



Dear Friend,

In the 40 years of our history, you and friends like you, have supported the **Friends of the Railroad Museum of Pennsylvania (FRM)** in carrying out our mission of actively assisting the world-class Railroad Museum of Pennsylvania. Your **passion for trains** has been critical to the successes we have had over the years in **preserving the iron icons** of railroad history and **educating the public** about the rich heritage of railroading in our nation.

Despite having to deal with the considerable financial, material and manpower setbacks from the COVID-19 pandemic, **the FRM has forged ahead**, just in this last year, working to stabilize the Pittsburgh & Lake Erie caboose No. 508, as well as two of the five Ready For The Roundhouse locomotives: Pennsylvania Railroad B6sb No. 1670 and H10s No. 7688. The K4s No. 3750, M1b No. 6755 and L1s No. 520 are next up for stabilization, an essential process in **saving these historic steam locomotives** for posterity. You will recall that you helped us cosmetically restore the E6s No. 3750, the storied Lindbergh Engine, only a few short years ago.

Also during the pandemic and the closure of the Museum for 13 months, the FRM took a leading role in **developing virtual programming** for the Museum's ever growing and diverse audience. When the Museum re-opened, its **unique on-site programming** resumed, as did the **access to its vast library and archives collections**, both in person and online.

The challenges have been many and formidable for the FRM, but so have the achievements, thanks to you and friends like you, who recognize the value of protecting and promoting all things railroading for future generations.

Would you please forward your tax deductible gift to the Friends of the Railroad Museum of Pennsylvania's **All Aboard 2023 annual fund** in order to help us to sustain our key staff, important library and archives endeavors, crucial restoration projects and dynamic educational programs, events and exhibits. If your employer participates in a matching program, please make use of that opportunity to enhance your donation.

You may **use the enclosed envelope or go conveniently and securely online** with your contribution on the Museum's website at RRMuseumpa.org. **We truly value every gift of any amount.** Thank you, as always, for your support!

Sincerely,

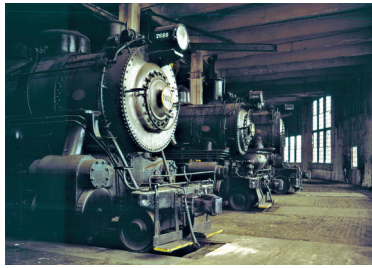
Patrick C. Morrison, Director
Railroad Museum of Pennsylvania

Douglas G. O'Brien, President, Board of Directors
Friends of the Railroad Museum of Pennsylvania



WITH OUR SINCERE THANKS TO YOU

For contributions of:



Don Wood



James R. Rose

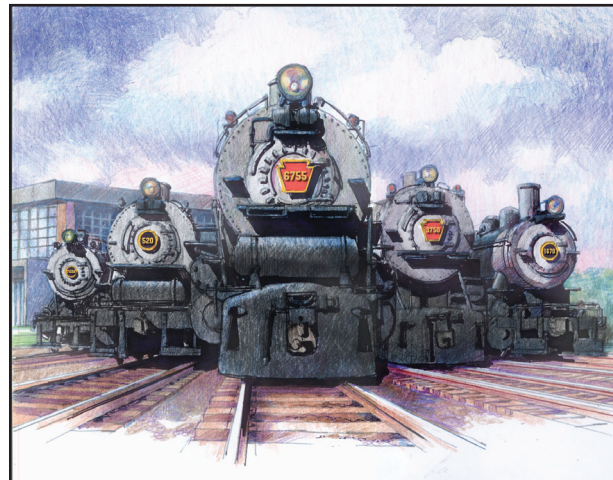
- **\$50 to \$99**, you will receive a set of 12, deluxe sized postcards featuring the railroad photography of **Don Wood**, or postcards featuring the railroad art of **James R. Rose**.

- **\$100 to \$249**, you will receive a fleece travel throw with a patch illustrating the Museum's **Tahoe locomotive No. 20**, or a limited edition, signed and numbered reproduction of the painting **The Lindbergh Engine** by artist **Carolyn Kilgour**.

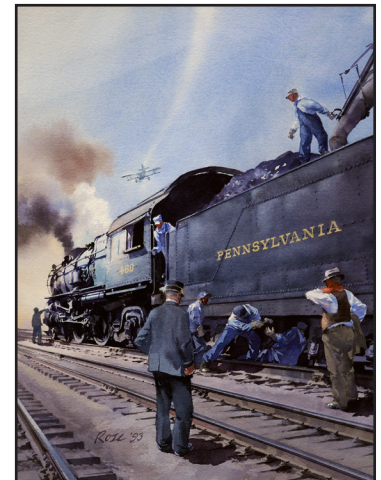


The Lindbergh Engine

- **\$250 to \$999**, you will receive a limited edition, signed and numbered reproduction of the watercolor painting **Ready For The Roundhouse** by artist **Peter Lerro Jr**, or a limited edition reproduction of the painting **White Knuckles** by artist **Ted Rose**.



Ready For The Roundhouse



White Knuckles


- **\$1,000 or more**, you will receive a custom cast reproduction builder's plate from a Pennsylvania Railroad steam locomotive **B6sb** or **L1s** or **K4s** or **M1b** or **H10s** or **E6s**.*



All thank you gifts are offered while supplies last. Alternative thank-you gifts may be substituted as supplies of advertised gifts are depleted.
*Delivery of builder's plates may require months due to the manufacturing process at the foundry.

FRIENDS OF THE RAILROAD MUSEUM OF PENNSYLVANIA

P. O. Box 125, Strasburg, PA 17579
(717) 687-8628 • RRMuseumPA.org

 Pennsylvania
Historical & Museum
Commission



The Railroad Museum of Pennsylvania is administered by the Pennsylvania Historical & Museum Commission, with the active support of the nonprofit Friends of the Railroad Museum of Pennsylvania

All Aboard is the annual fund of the Friends of the Railroad Museum of Pennsylvania. For information on giving opportunities, contact the Railroad Museum of Pennsylvania Director or Museum Advancement Director. The Friends of the Railroad Museum of Pennsylvania is a nonprofit organization recognized as tax exempt under section 501(c)(3) of the Internal Revenue Service Tax Code. Gifts to the Friends of the Railroad Museum of Pennsylvania are tax deductible to the fullest extent of the law. The official registration and financial information of the Friends of the Railroad Museum of Pennsylvania may be obtained from the Pennsylvania Department of State by calling toll free within Pennsylvania: 1(800)732-0999; CONNECTICUT: Office of the Attorney General, Department of Consumer Protection, 165 Capitol Avenue, Hartford, CT 06106; FLORIDA: Department of Agriculture & Consumer Services, Division of Consumer Services, Terry Lee Rhodes Building, 2005 Apalachee Parkway, Tallahassee, FL 32399; MARYLAND: Office of the Secretary of State, Charitable Organizations Division, 1 Francis Street, Annapolis, MD 21401; NEW JERSEY: Department of Law & Public Safety, Division of Consumer Affairs, 124 Halsey Street, Newark, NJ 07102; NEW YORK: New York State Office of the Attorney General, Charities Bureau, 120 Broadway, 3rd Floor, New York, NY 10271; OHIO: Attorney General, 30 East Broad Street, 14th Floor, Columbus, OH 43215; VIRGINIA: Department of Agriculture & Consumer Services, Office of Charitable Giving & Regulatory Programs, 102 Governor Street, Richmond, VA 23219. Registration does not imply endorsement. Contributions to All Aboard are separate from, and do not constitute, membership in the Friends of the Railroad Museum of Pennsylvania.